

#### SPECIFICATIONS

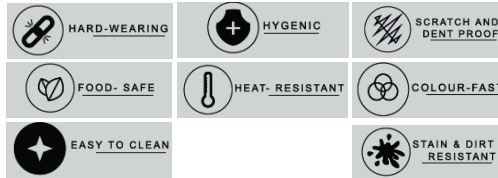


LXGRS15DM-DBK

*Crystalux*

#### Features

- Dual mount Configuration
- Up to 80% natural granite mineral, acrylic resin and hardener.
- Up to 5 Hole (Partially pre-drilled)



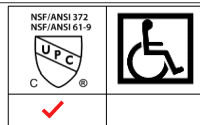
#### Dimensions

- Overall size: 15"x18" Single Bowl
- Depth: 8"
- Minimum/Standard Cabinet Size: 18"
- Drain Opening: 3-1/2"
- Drain Placement: Rear

#### Accessories

Stainless Steel Strainer with Plastic Tail Piece - Included  
Mounting Clips - Included  
Cut Out Template - Included  
Stainless Steel Bottom Grids - Optional

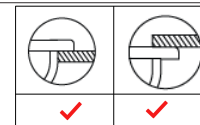
#### Standards & Certifications



#### Available Finishes

Deep Black				
✓				

#### Mount Type



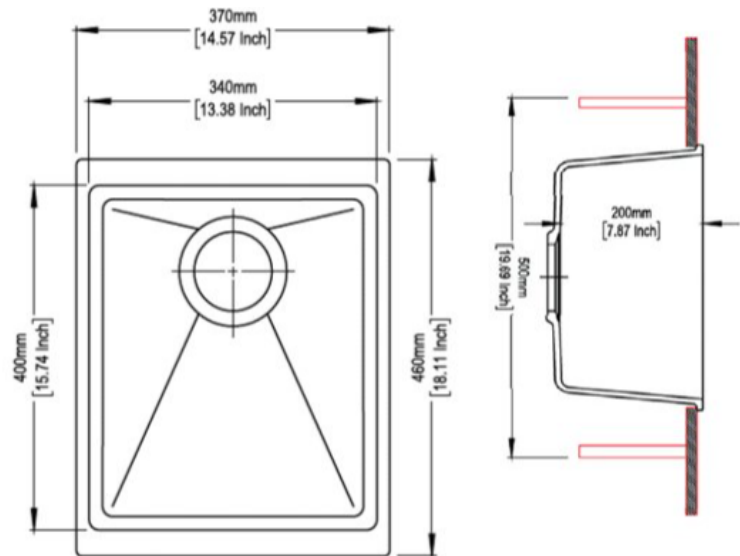
Please visit [www.Luxartcollection.ca](http://www.Luxartcollection.ca) for available finishes & options. Finish is defined by additional suffix.

#### Similar Models

MODEL	SIZE(INCH)	DEPTH	HOLES
LXGRD33TM-DBK	33" x 22"	9"	Up to 5
LXGRD33UM-DBK	33" x 19"	9"	Up to 5
LXGRD31UM-DBK	31" x 19"	9"	Up to 5

Please visit [www.Luxartcollection.ca](http://www.Luxartcollection.ca) for more information.

#### Drawings



All dimensions listed are nominal. Luxart® reserves the right to make product and material changes at any time without notice.



Luxart warrants to the original purchaser of Crystalux Granite sinks installed in the United States or Canada for as long as the original purchaser owns his or her home that Luxart will provide an equivalent sink to replace any Luxart Crystalux Granite sink that fails due to a manufacturing defect provided that the sink has been solely for residential use and has not been damaged due to abuse, misuse, or negligence. This limited warranty does not cover and Luxart is not liable for transportation costs, labor charges incurred and/or damages sustained during the course of installation, repair, or replacement of any product(s) provided under this limited warranty. This limited warranty is nontransferable.

#### SUBMITTAL INFORMATION

Name:	_____	Contractor:	_____
Location:	_____	Contact #:	_____
Notes:	_____		

#### Service & Parts

Please reach out to [epleservice@emcoltd.com](mailto:epleservice@emcoltd.com) for support/ visit [Luxartcollection.ca](http://Luxartcollection.ca) / CANADA +1 (450) 621 5636