

SPECIFICATIONS

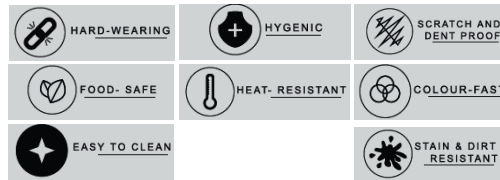


LXGRD31UM-DBK

Crystalux

Features

- Undermount Configuration
- Up to 80% natural granite mineral, acrylic resin and hardener.
- Up to 5 Hole (Partially pre-drilled)



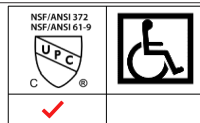
Dimensions

- Overall size: 31" x 19" Double Bowl
- Depth: 9"
- Minimum/Standard Cabinet Size: 33"
- Drain Opening: 3-1/2"
- Drain Placement: Rear

Accessories

- Stainless Steel Strainer with Plastic Tail Piece - Included
- Mounting Clips - Included
- Cut Out Template - Included
- Stainless Steel Bottom Grids - Optional

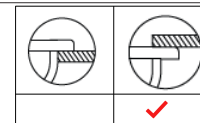
Standards & Certifications



Available Finishes

Deep Black				
✓				

Mount Type



Please visit www.Luxartcollection.ca for available finishes & options. Finish is defined by additional suffix.

Similar Models

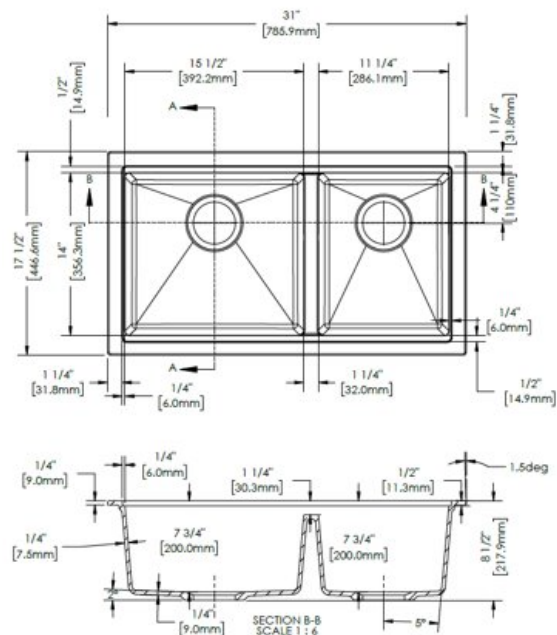
MODEL	SIZE(INCH)	DEPTH	HOLES
LXGRD33TM-DBK	33" x 22"	9"	Up to 5
LXGRD33UM-DBK	33" x 19"	9"	Up to 5
LXGRD31TM-DBK	31" x 20"	9"	Up to 5

Please visit www.Luxartcollection.ca for more information.



Luxart warrants to the original purchaser of Crystalux Granite sinks installed in the United States or Canada for as long as the original purchaser owns his or her home that Luxart will provide an equivalent sink to replace any Luxart Crystalux Granite sink that fails due to a manufacturing defect provided that the sink has been solely for residential use and has not been damaged due to abuse, misuse, or negligence. This limited warranty does not cover and Luxart is not liable for transportation costs, labor charges incurred and/or damages sustained during the course of installation, repair, or replacement of any product(s) provided under this limited warranty. This limited warranty is nontransferable.

Drawings



All dimensions listed are nominal. Luxart® reserves the right to make product and material changes at any time without notice.

SUBMITTAL INFORMATION

Name:	Contractor:
Location:	Contact #:
Notes:	

Service & Parts

Please reach out to epleservice@emcoltd.com for support/ visit Luxartcollection.ca / CANADA +1 (450) 621 5636