



## Granite Sinks Undermount

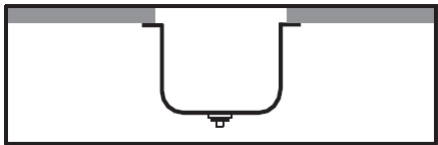
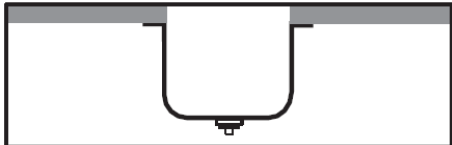
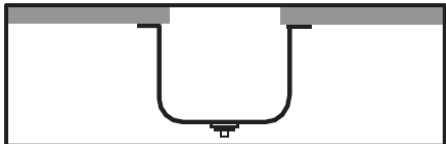
# Installation Instructions

### MODELS

- LXGRD33EUM
- LXGRD31UM
- LXGRD31EUM
- LXGRS21UM
- LXGRS30UM

These instructions are for installing MLUX Undermount Granite sinks . Undermount sinks are sinks that are mounted from below the countertop . If you are installing another type of sink, such as a Drop In sink which is installed on top of the counter please refer to instructions specifically for those sinks.

MLUX Granite Undermount sinks can be installed with three different reveals Positive, Zero, or Negative each creating a distinctive look where the countertop and sink meet (see diagram) . Deciding on your preferred look must be done prior to installation.

|  |  |
|--|--|
| <p><b>Positive Reveal</b> - The countertop edge sits approximately 1/8" back from the edge of the sink exposing the sink rim All MLUX Granite undermount sinks feature a 1" finished rim.</p> <p><b>All MLUX Granite undermount sinks feature an approximate 1/8" positive reveal.</b></p> |  |
| <p><b>Zero Reveal</b><br/>The countertop meets the edge of the sink , fitting flush with the sink bowls. <b>Cutout supplied here is of Zero Reveal type.</b></p>   |  |
| <p><b>Negative Reveal</b><br/>The countertop extends over the edge of the sink on all sides by approximately 1/8". Use caution with this installation to be sure that accessories such as colanders or cutting boards will fit properly.</p>   |  |



## Granite Sinks Undermount

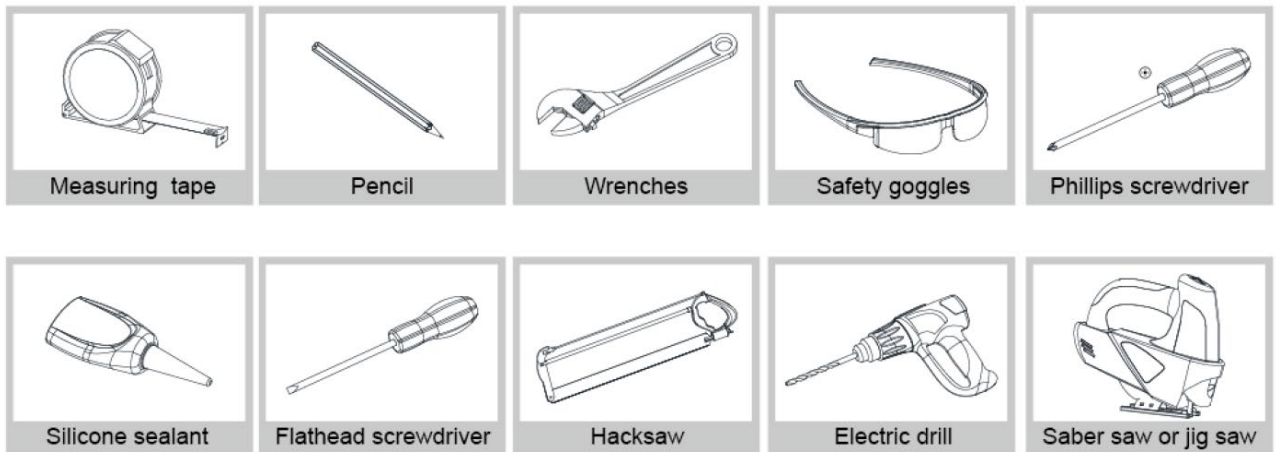
# Installation Instructions

**Templates are supplied only as a guide. The physical use of the sink will ensure a more accurate cutout.**

- The instructions that follow are for installing a MLUX undermount Granite Sink in a solid surface countertop only.
- Minimum thickness of the actual countertop material is one half inch. In addition, a one inch build up around the sink is preferred.
- MLUX recommends that undermount sinks and routing of your solid surface material should be installed by a professional installer for best results.
- Requirements vary for installation in a granite, marble, stone, or butcher block countertop. Please contact your fabricator for specific details.
- Before installing, inspect the sink for damage. Do not install a damaged unit.
- Remember, it is your responsibility to follow all local plumbing and building codes.

**The warranty will be voided if these installation instructions are not followed.**

### Tools You Will Need



In addition to the above, the following Tools/Materials will help with the installation  
Ear protection strongly recommended | Undermount template supplied by MLUX |  
Undermount mounting clips available in the package | Wood braces | Ball peen  
hammer | Rags | Bar Clamps | Framing Square | Stop Blocks | Router | 5/8" Template  
guide with straight fluted router bit | Denatured Alcohol.



## Granite Sinks Undermount

# Installation Instructions

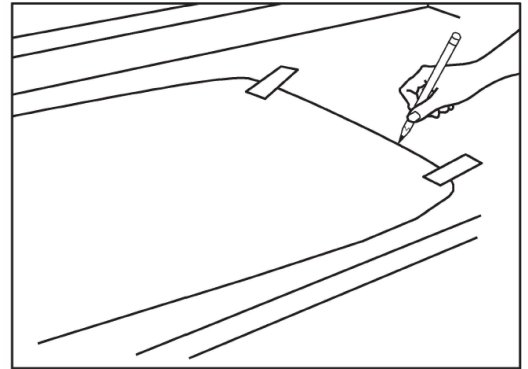
### Step 1 – Recommended for Professional installers only

Create a template.

Using a framing square, draw a line from front to back on the bottom of the countertop, indicating the location of the center of the sink.

Draw a line parallel to the front edge of the countertop, indicating how far back the sink should be located. Typically, the set back is 2-2 1/2" from the front of the counter, depending on the countertop overhang, the type of sink bowl and the type of sink deck.

To create a template, turn the sink upside down on a piece of plywood and draw around it. Or place template transfer paper or cardboard template on plywood.



**NOTE:** Paper templates are supplied only as a guide. Using the actual sink ensures more accurate cut out.

Mark the center point of the sink on the template.

If you are using a 5/8" template guide on your router, draw another line, 1/6" outside the sink outline. This allows for the 5/8" template guide. If you are using other cutting measures, adjust accordingly.

**CAUTION :** Be sure to cut on the inside of the template line to obtain your desired reveal.

Adjust the template size to allow for the type of reveal. (Overhang or positive reveal)

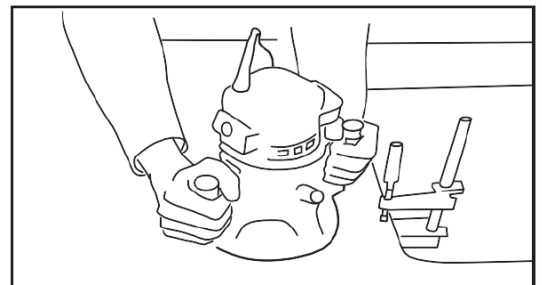
Cut the plywood template, paying attention to the corner radius.

### Step 2 – Recommended for Professional installers only

Make the sink cut out. Find the center of the sink template and align it with the center mark drawn on the countertop. Place the template with the front edge along the front edge line drawn on the countertop.

Secure the plywood template to the countertop using 6" bar clamps. Place the router over the plywood template and cut around it, making sure the router follows the edge of the template. This creates the sink cut out.

Finish the inside of the sink cutout according to the recommendations of the countertop supplier.





## Granite Sinks Undermount

# Installation Instructions

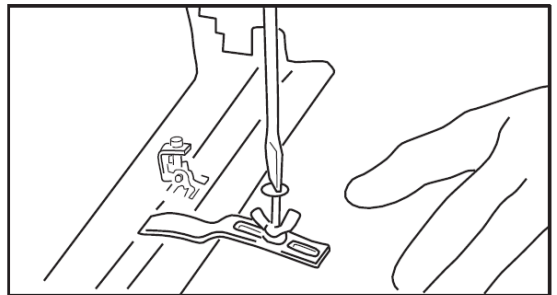
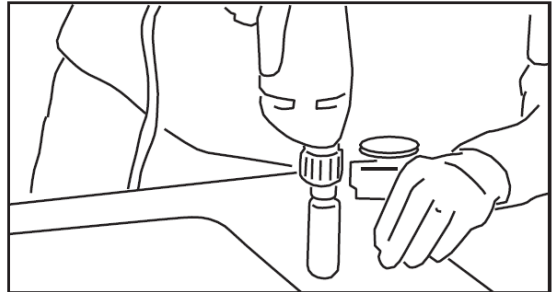
### Step 3 – Recommended for Professional installers only

Attach the undermount clips.

Position the bowl so that the reveal is equidistant. Then on underside of the countertop, drill holes for brass inserts for the undermount clips. Use a drill bit with stop block to avoid drilling through the top. For  $\frac{1}{2}$ " countertop material, drill  $\frac{3}{8}$ " deep holes.

Use three clips on the long side of the sink, and two clips on the short side of the sink or follow the locations on the template that comes with the sink. Drill holes 1" back from the cut-out edge.

NOTE: The undermount clip is  $\frac{3}{4}$ " wide and  $2\frac{3}{4}$ " in length. The clip may be too long for some installations. If this is the case, make a brace out of the wood or solid surfacing, butt it up against the sink, and onsite, screw it to the cabinet wall. Measure the thickness of the brace and the cabinet wall so that the screws does not go through the other side of the cabinet.



### Step 4 – Recommended for Professional installers only

Install the sink.

Clean the bottom of the countertop and the top flange or lip of the sink with denatured alcohol. Then apply a bead of silicone adhesive sealant to the top edge of the bowl flange and position the bowl in the countertop.

### Step 4 – Recommended for Professional installers only

Tighten the clips.

Tap in the brass inserts (anchors) for clips into the pre-drilled holes with the slotted ends first.

Thread a wingnut onto a screw, up near the head. With washer and slotted clip in place, tighten the screw to anchor the brass clip into the countertop material. Repeat for each clip.

Hand-tighten the wingnuts to secure the sink bowl.

NOTE: do not fully tighten one clip at a time. Partially tighten a clip, then partially tighten the clip across from it. After each clip is partially tightened, repeat the process, fully tightening each clip. This ensures a secure installation and avoid damages to the sink.

Remove excess sealant from the inside lip of the bowl using appropriate cleaner on a clean rag.



# Installation Instructions

## Granite Sinks Undermount

### Care & Cleaning Guidelines

#### Take care to avoid the following in Granite Sinks

Leaving bleach or cleaning agents containing bleach on your sink surface for any length of time. Many of the general cleaning agents contain bleach, including a number of the new “trigger dispense” products, most domestic dishwasher liquids and some multi-purpose cream cleaners.

If bleach is necessary, e.g., to clean the overflow or waste outlet, squirt directly into the hole and leave for 2 to 3 minutes only, then rinse thoroughly with clean water. Under no circumstances allow the bleach to be in contact with the sink surface for longer than 30 minutes as long appearance of the sink will be affected.

If a “stain” has become deeply ingrained and cannot be removed by the methods outlined above, then soak the area overnight in a solution of 40 parts water and 1 part bleach or biological washing powder. Drain this after eight hours and rinse thoroughly with clean water. This should not be used as a routine cleaning method.

Deposition of scale through lime, Calcium & Hard Water, Wipe with non-Abrasive woven nylon pad and diluted (50/50) white vinegar. Rinse after 10 to 15 minutes twice in a week.

#### "The Don'ts":

- Always avoid the use of metal scouring pads, or wire wool, as they will leave a metal residue on the surface of the sink. Over time these minute particles will rust and then give the appearance that the surface of the sink has stained.
- Do not leave any mild steel or cast-iron cookware or implements anywhere on the sink for extended periods of time. The combined presence of iron and moisture can only lead to staining of the sink.
- Do not leave rubber dish mats, wet sponges, or cleaning pads in the sink overnight as they will trap water which could lead to staining and discoloration of the sink surface.
- Do not let concentrated bleaches or products containing chlorinated solvents (paint strippers) or products containing formic acid (drain cleaner or kettle descaler) come into contact with the surface of the sink. They may cause discoloration.
- Any accidental contact with these materials should be addressed by an immediate cleaning and rinsing of the sink.
- Granite has a high heat resistance of 536°F (280°C) and will be virtually unaffected by brief exposure to objects at this temperature. However, we do not recommend that the sink be used as a cooling place for hot objects, please use a separate insulated board or tray for that purpose.

Cleaning your sink correctly will contribute to a longer service life and better appearance of your sink.

#### Please also note:

Kitchen sinks require regular care. Please follow our care instructions.

- Do not use rubber mats in the sink. Softeners contained therein can damage the sink surface.
- Objects that fall into the sink may damage it.
- Ensure the cabinet under the sink is well ventilated in order to avoid condensation forming on the underside of the sink in the event of unfavorable climatic conditions.
- Do not store open containers holding cleaning agents or chemical substances, e.g., solvents, under the sink.



## LIMITED LIFETIME SINK WARRANTY

MLUX warrants to the original purchaser of MLUX Granite Sinks installed in the United States or Canada for as long as the original purchaser owns his or her home that MLUX will provide an equivalent sink to replace any MLUX Granite sink that fails due to a manufacturing defect provided that the sink has been solely for residential use and has not been damaged due to abuse, misuse, or negligence. This limited warranty does not cover and MLUX is not liable for transportation costs, labor charges incurred and/or damages sustained during the course of installation, repair, or replacement of any product(s) provided under this limited warranty. This limited warranty is nontransferable.

To execute a warranty claim, the original purchaser must return to the place of purchase and validate that they are the original buyer of the sink by supplying the original sales receipt. MLUX has the right to inspect any sink reported to be defective prior to replacement of the sink. All decisions are final. Replacement of the sink does not include removal of the defective sink, installation of the replacement sink, replacement of faucet, replacement of any parts, or any other related expense.

This warranty shall not apply in the event of:

- Improper installation or modification of a MLUX sink
- Damages resulting from abuse including dents or cracks or breakage resulting from impact of dropped objects
- Damages resulting from improper care or maintenance
- Normal use including scuffs or scratches
- Improper use (such as exposure to corrosive chemicals or cleaning compounds)
- Commercial use

Disclaimers. EXCEPT AS SET FORTH ABOVE, MLUX MAKES NO WARRANTIES, WHETHER EXPRESS, IMPLIED, OR STATUTORY REGARDING OR RELATING TO THE PRODUCT OR SERVICE SUPPLIED HEREUNDER. THE PRODUCT MANUAL, OR ANY MATERIALS OR SPECIFICATION PROVIDED BY MLUX, DOES NOT PROVIDE ANY WARRANTY WHATSOEVER. TO THE GREATEST EXTENT ALLOWED BY LAW, MLUX SPECIFICALLY DISCLAIMS ALL IMPLIED WARRANTIES OF MERCHANTABILITY AND FITNESS FOR A PARTICULAR PURPOSE (EVEN IF MLUX HAD BEEN INFORMED OF SUCH PURPOSE) WITH RESPECT TO THE PRODUCT.

Limitation on Damages. In no event shall the liability of MLUX exceed the purchase price of the sink. MLUX disclaims liability for any special, incidental, consequential, punitive or exemplary damages arising out of or in connection with the product, any other materials or services furnished hereunder, even if MLUX has been advised, knows, or should know of the possibility of such damages. The preceding constitutes MLUX's entire liability and your sole and exclusive remedy for breach of warranties herein set forth. (Some states do not allow the exclusion or limitation of implied limited warranties, so the above exclusion may not apply to you.) This warranty supersedes all other warranties, expressed or implied. The foregoing warranties are exclusive and made only to the original buyer.

**Contact us: Have Questions or in need of support?**

**Visit our website.**

**See Product Label for more information.**