

Utility Cabinet with Stainless Steel Sink & Faucet

All-in-one

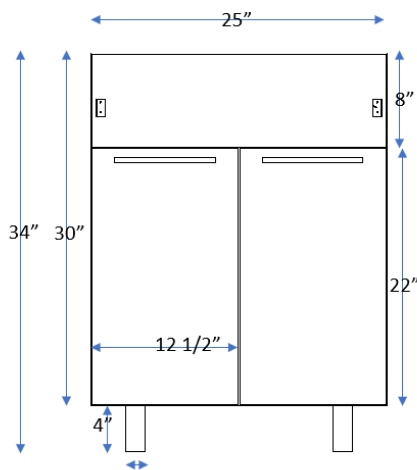
LX3571AIO



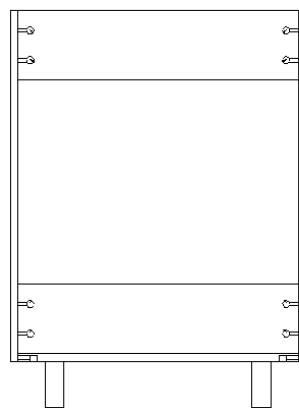
FEATURES

- Polished Chrome Pull Down Kitchen Faucet.
- CUPC Certified/Spring Pull Down.
- Top Mount Stainless Steel Kitchen Sink
- Stainless Steel Cup Basket Strainer with Plastic Tail Piece
- 20 Gauge Type 304 Stainless Steel
- Laundry cabinet with big storage space for large containers
- Two Doors.
- Soft Close Doors with Handle
- Metal Handles
- USA/CARB Approved Cabinet
- High Gloss Cabinet Finish
- Scratch Resistant Finish
- Grey Color
- Shipped un-assembled.

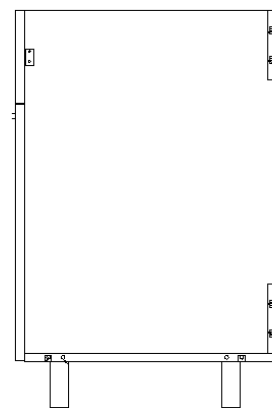
WARRANTY - 2 YEARS LIMITED WARRANTY



Door panel line drawing



Internal structure diagram



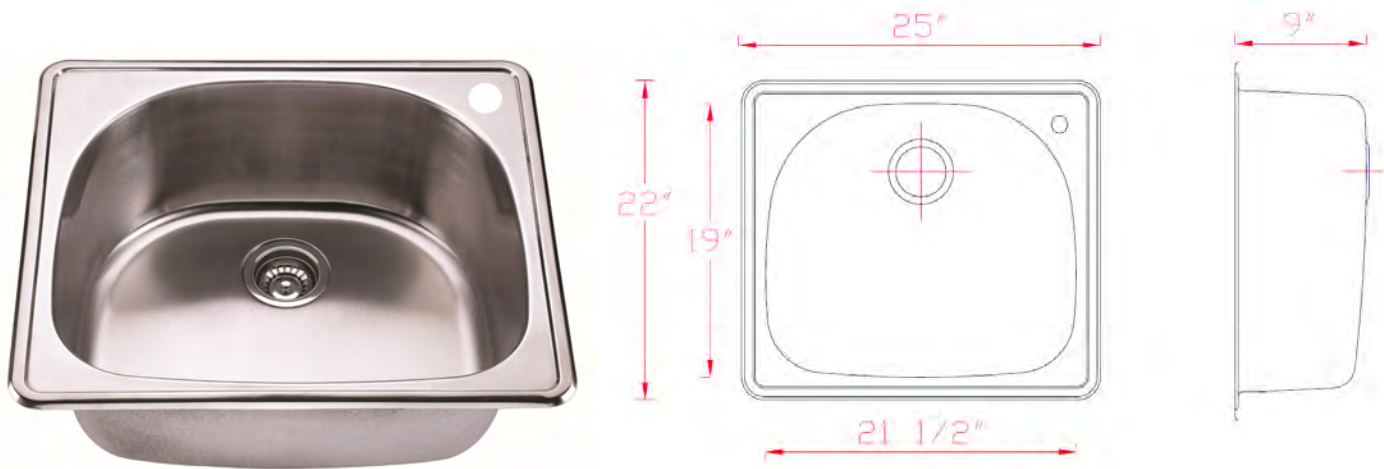
Side view

Approximate Measurements

Utility Cabinet with Stainless Steel Sink & Faucet

Specifications

STAINLESS STEEL SINK



Dimensions

- Bowl Size External - 25 Inch X 22 Inch
- Bowl Size Internal - 21 1/2 Inch X 19 Inch
- Depth - 9 Inch
- Gauge - 20
- Material - Type 304 Stainless Steel
- Design - Single Hole, Corner
- Drain Placement - Rear Center Aligned
- Drain Opening - 3 1/2 Inch

Features & Inclusions

- Includes Mounting Clips.
- Includes Basket Strainer with Tail Piece*
- Fully Undercoated
- Sound Absobtion pads

STAINLESS STEEL STRAINER



Features & Inclusions

- Deep Locking Cup For Easy Installation
- Stainless Steel Basket
- Plastic Waste Bowl
- Plastic Tailpiece

#	Part/ No de pièce	Material/ Matériel
1	Basket/ Panier	Stainless Steel/ Acier inoxydable
2	Screw/ Vis	Brass/ Laiton
3	Strainer Bowl/ Récipient de crépine	Stainless Steel/ Acier inoxydable
4	Top Seal/ Joint d'étanchéité supérieur	Rubber/ Caoutchouc
5	Bottom Seal/ Joint d'étanchéité inférieur	Rubber/ Caoutchouc
6	Waste Bowl/ Récipient à ordure	PE
7	Tailpiece/ Rallonge	PE

Utility Cabinet with Stainless Steel Sink & Faucet

Specifications

PULL DOWN FAUCET

: 95HI F9G

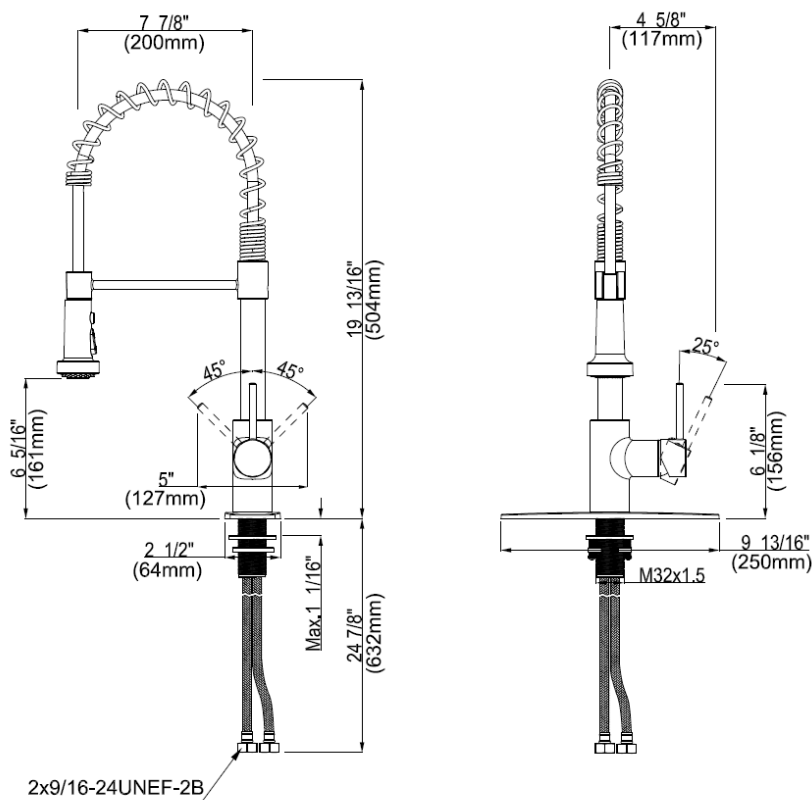


- Polished Chrome Finish
- Metal Lever Handle
- Ceramic Disc Cartridge
- Lead Free* Polymer Lined Waterways
- 360° Swivel Spout
- Includes Optional Deck Plate, Check Valve and Quick Connector
- Water Saving Aerator
- Max Flow Rate: 1.8 GPM @ 60 PSI
- 100% Factory Pressure Tested

APPLICABLE STANDARDS/CODES

Specified model meets or exceeds the following:

- ASME A112.18.1/CSA B125.1
- IAPMO/cUPC
- NSF/ANSI 372
- NSF/ANSI 61 – Sec. 9
- ADA
- *≤ .25% Pb



Approximate Measurements