



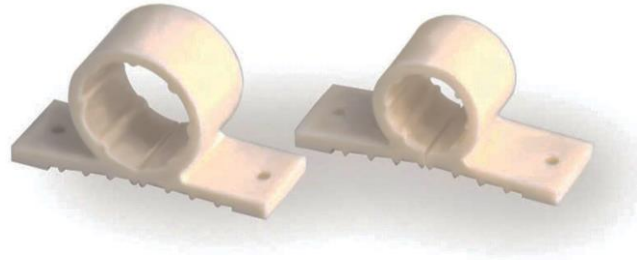
MAINLINE®

2-Hole Pipe Clamps

Product Specifications

FEATURES

- Sizes: 1/2", 3/4", 1", 1-1/4", 1-1/2", 2" CTS
- Reduces noise caused by expansion and contraction of tubing
- Impact resistant to 0°F (-18°C)
- Max temp 160°F (71°C) continuous
- Supports copper, PEX, polybutylene and CPVC tubing
- Isolates supply tubing from wood framing



✓ To Submit	Part #	Description	Bag Quantity	Case Quantity
	ML10931	1/2" CTS 2-Hole Insulating Pipe Clamp	100	2000
	ML10932	3/4" CTS 2-Hole Insulating Pipe Clamp	100	1000
	ML10933	1" CTS 2-Hole Insulating Pipe Clamp	50	500
	ML10934	1-1/4" CTS 2-Hole Insulating Pipe Clamp	50	250
	ML10935	1-1/2" CTS 2-Hole Insulating Pipe Clamp	25	250
	ML10936	2" CTS 2-Hole Insulating Pipe Clamp	25	250

Warranty

See warranty information for more details.

All dimensions listed are nominal. MAINLINE® reserves the right to make product and material changes at any time without notice.



Contact your sales representative for more information or visit our website at mainlinecollection.ca